



Saskatchewan

An initiative of  **United Way**

**2023
Annual
Report**



MESSAGE FROM THE DIRECTOR

As we reflect on the past year, I am thrilled to introduce the 211 Saskatchewan Annual Report, a comprehensive overview of our collective impact and the strides we've made in serving our community.

In a year that presented unforeseen challenges, the team at 211 Saskatchewan stood resilient, ensuring that our commitment to providing vital assistance and support remained unwavering. This annual report serves as a testament to the dedication of our staff, the strength of our partnerships, and the impact of our collective efforts.

We extend our deepest gratitude to everyone who has played a role in making these achievements possible. Whether you're a dedicated staff member, a valued partner, a service provider or a supporter of our continued work across the province, your contributions are integral to the success of 211 Saskatchewan and the community we serve.

We invite you to delve into the report and celebrate the milestones we've reached together and the countless lives we have impacted. Together, we are building a stronger, more resilient community, and with your continued support, we look forward to achieving even greater heights in the coming year.

Thank you for your unwavering commitment to the mission of 211 Saskatchewan.

Kristin Nelson
Director
211 Saskatchewan



2023 Yearly Snapshot

Contacts:

233,261
unique site visits

3,993
contacts

Top Needs:

20%
Basic Needs



12%
Income Support
and Employment



19%
Mental
Health and
Substance Use



7%
Abuse/Assault/
Violence



17%
Health Care



7%
Organization/
Community/
International



Unmet Needs:

Homeless
Shelter

Domestic Violence
Shelter

Food Banks

Social Assistance
Programs

Rent Payment
Assistance

Unmet needs occur
when a referral to
services cannot be made.

Contacts by Location:

26.8%
Saskatoon

23.8%
Regina

4.5%
Prince Albert

3.0%
Moose Jaw

2.0%
North Battleford

Contacts by Type:

73%
Phone

13%
Text

9%
Online Chat

5%
Email

Number of Communities:

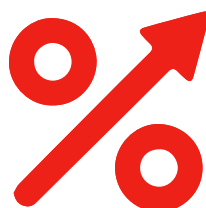
253

Towns/Cities/Communities across
Saskatchewan accessed
211 Saskatchewan

Getting Social



631k
Social Media
Impressions
across all
platforms



526%
Increase to
interactions
across all
platforms



35-44
Age range
of users
who predominantly
engage on our
social platform

INTERPERSONAL VIOLENCE SITE

Launched in December 2021, with support from the Government of Saskatchewan, the Interpersonal Violence Site has provided those facing challenges a centralized location to find and get the help they need.

Those seeking help can quickly find confidential supports, emotional assistance, safety planning, and access to resources such as shelters and legal aid.

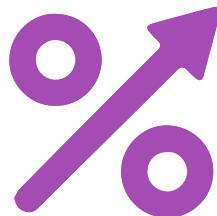
The site also plays a crucial role in crisis intervention, connecting survivors with emergency services when necessary.

By offering support and validation, survivors feel heard and empowered as they navigate their journey towards safety and healing.



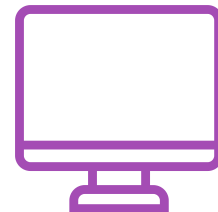
20,000

unique visitors to
the IPV Site



41

percent increase
in visits from 2022



23,000

pages of resources
accessed

UNVEILING THE URGENCY

In 2022, Saskatchewan (730 victims per 100,000 population) had the highest provincial rates of police-reported family violence and intimate partner violence.

From 2014 to 2022, there were large increases in intimate partner violence among adults aged 25 to 64 years and seniors aged 65 years and older.

Compared with 2014, intimate partner sexual assault was 163% higher in 2022, while intimate partner physical assault and indecent or harassing communications also increased.



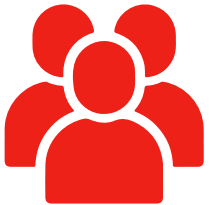
PARENT CENTRAL

Parent Central provides reliable information and resources for parents and caregivers of children aged 0 - 6 in Saskatchewan.

Since launching in 2021, with on-going support from the Government of Saskatchewan, Ministry of Education, Parent Central has connected families, and those who serve them, to supports and programs across the province.

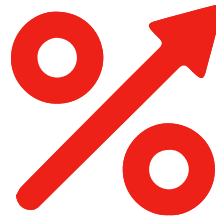
From the early stages of pregnancy to the first day of kindergarten, our platform is designed to support parents and caregivers every step of the way.

Parent Central offers a wealth of information on childcare, child development, child health, safety, and wellness, all available 24/7.



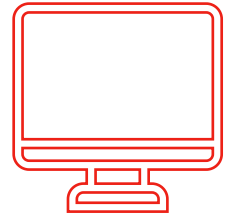
21,000

unique visitors to
Parent Central



162

percent increase
in visits from 2022



190,000

pages of resources
accessed

FROM A PARENT CENTRAL VISITOR

"I cannot express enough how invaluable this platform has been for me. Navigating the complexities of being a new parent can feel overwhelming, but after visiting Parent Central, I've found a reliable resource that provides excellent, on-going support.

With the wealth of information and resources, I've been able to address various parenting challenges with more confidence. Being able to access the extensive database of articles have truly made a difference in my journey as a parent."



RE:CONNECT

HELP ————— LINE

In Saskatchewan, the expansion of crisis hotline services represents a critical step towards addressing the complex issue of gender-based violence.

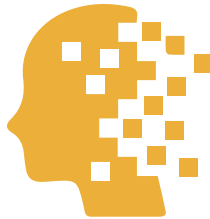
This initiative, delivered by United Way's 211 Saskatchewan, Family Service Regina with funding through the Government of Saskatchewan, seeks to provide comprehensive support for individuals at risk of perpetrating violence, employing a trauma-informed approach at its core.

Since launching in November 2023, the heart of this program lies a commitment to accessibility and confidentiality. The expanded services are available 24/7 and comes at no cost to the callers, ensuring that financial barriers do not hinder those in need from seeking help.



4,200

unique visitors to the
RE:CONNECT site



1800

minutes
of support
provided



176

referrals to support
programs and services

*data shown is from November to December 2023

RE:CONNECT SUCCESS STORY

"I was really struggling with stress and guilt for a while. I didn't know where to turn, but then I decided to reach out to **Re:CONNECT** for help. Talking to the counselor there was such a relief for me. I could finally open up about what I was going through and talk about my relationship issues without feeling judged.

The counselor reminded me that support in a relationship is important, but they also made it clear that it's ultimately up to each person to choose to be supportive.

It made me realize that I have the power to shape my relationships and take control of my own happiness. It was like a weight lifted off my shoulders. Now, armed with this new perspective, I feel more confident moving forward and making choices that will lead to healthier connections with others."



PARTNERS AND SUPPORTERS

At 211 Saskatchewan, our mission to help connect community to essential services to those in need is made possible through the invaluable support of our funders and supporters. They form the backbone of our operations, providing the financial resources and advocacy needed to ensure that our services reach individuals and communities across the province. Whether through direct funding, expertise, or increasing our support efforts, our supporters play a vital role in sustaining and expanding our programs.



United Way

Proudly Sponsored by:  **SASKATCHEWAN BLUE CROSS®**

"211 Saskatchewan is key to helping people navigate services and programs for each unique situation." said Kelly Wilson, President and CEO of Saskatchewan Blue Cross.

"We're proud to support this incredible resource for Saskatchewan residents that helps build Health Literacy and connections for our communities."





Saskatchewan



Text
2-1-1



Call
2-1-1



Go Online
sk.211.ca

**211 Saskatchewan
Business Office**

1440 Scarth Street

Regina, SK. S4R 2EP

211sask@unitedwayregina.ca

To view our audited financial statements visit
<https://unitedwayregina.ca/about-us/financials/>

